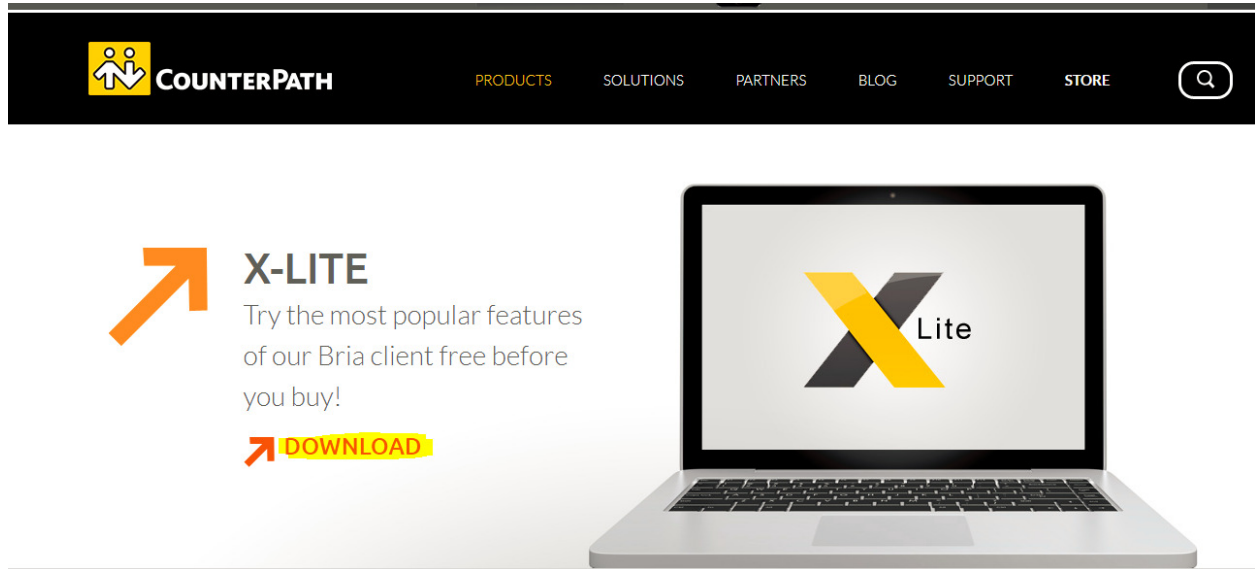


Setting up X-Lite

Step 1: Go to <http://www.counterpath.com/x-lite.html> to download the X-Lite softphone software and install it.

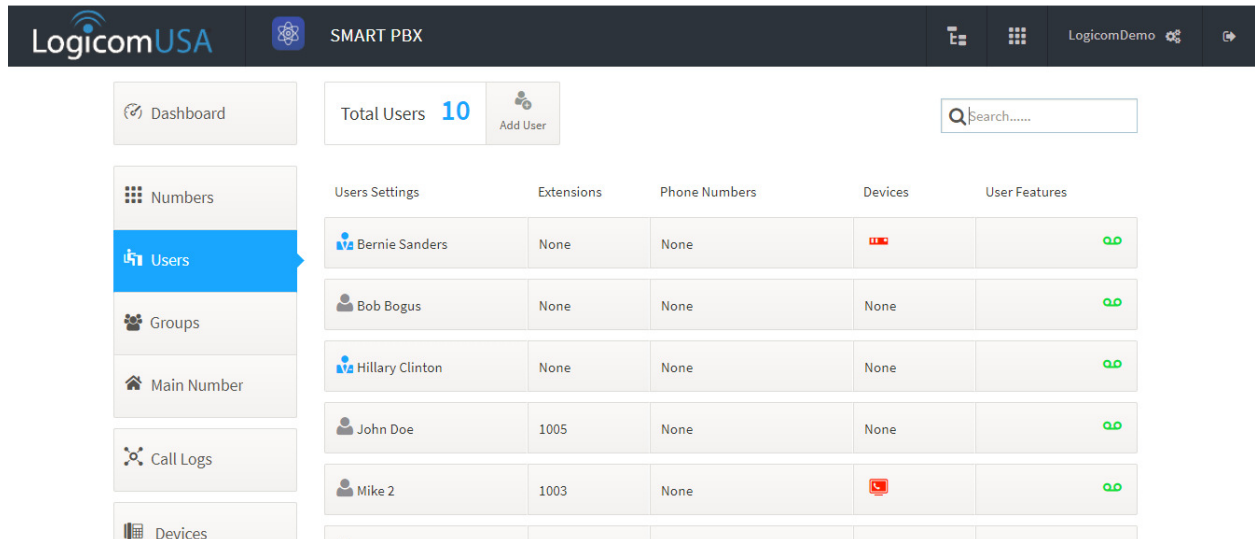


COUNTERPATH PRODUCTS SOLUTIONS PARTNERS BLOG SUPPORT STORE

X-LITE
Try the most popular features of our Bria client free before you buy!

DOWNLOAD

Step 2: From the Smart PBX toolbar, select Users.

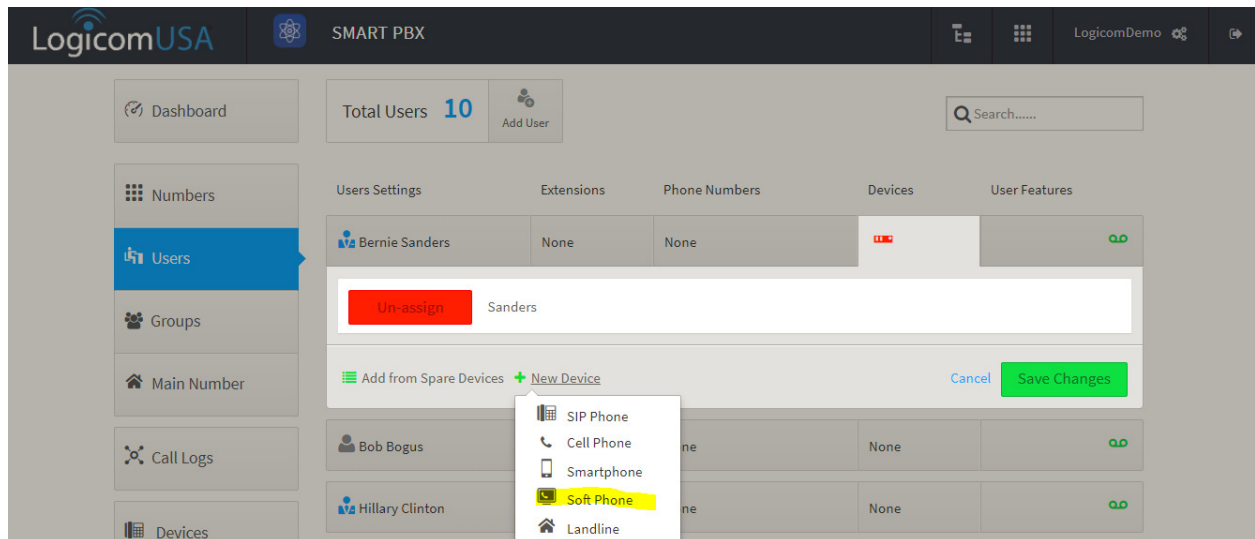


LogicomUSA SMART PBX

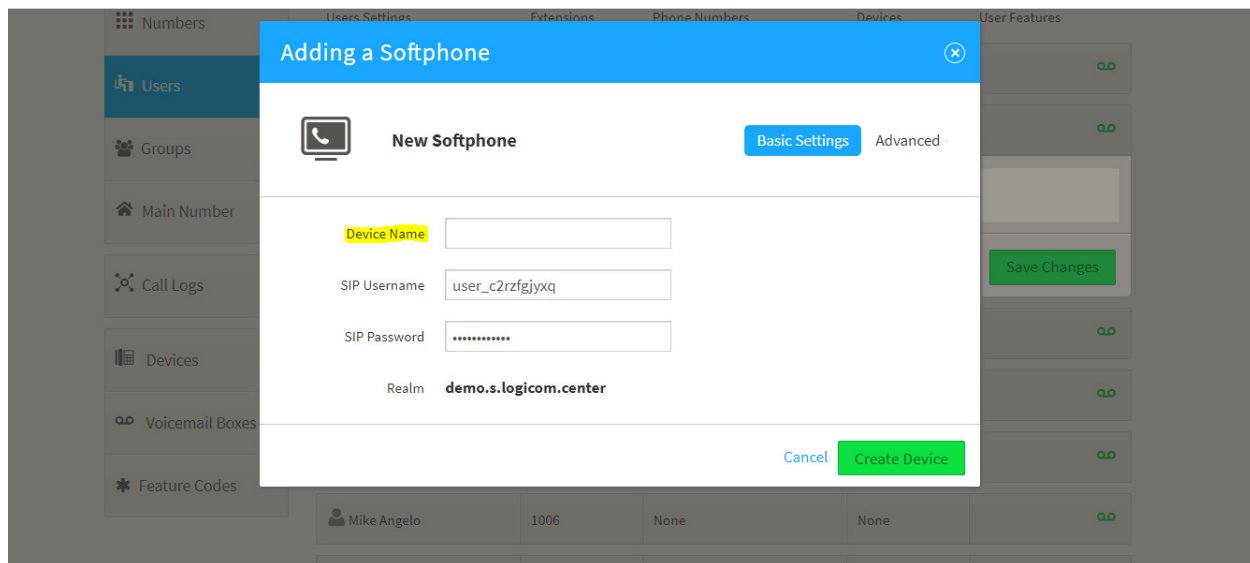
Dashboard Total Users 10 Add User Search.....

Users Settings	Extensions	Phone Numbers	Devices	User Features
Bernie Sanders	None	None		
Bob Bogus	None	None	None	
Hillary Clinton	None	None	None	
John Doe	1005	None	None	
Mike 2	1003	None		

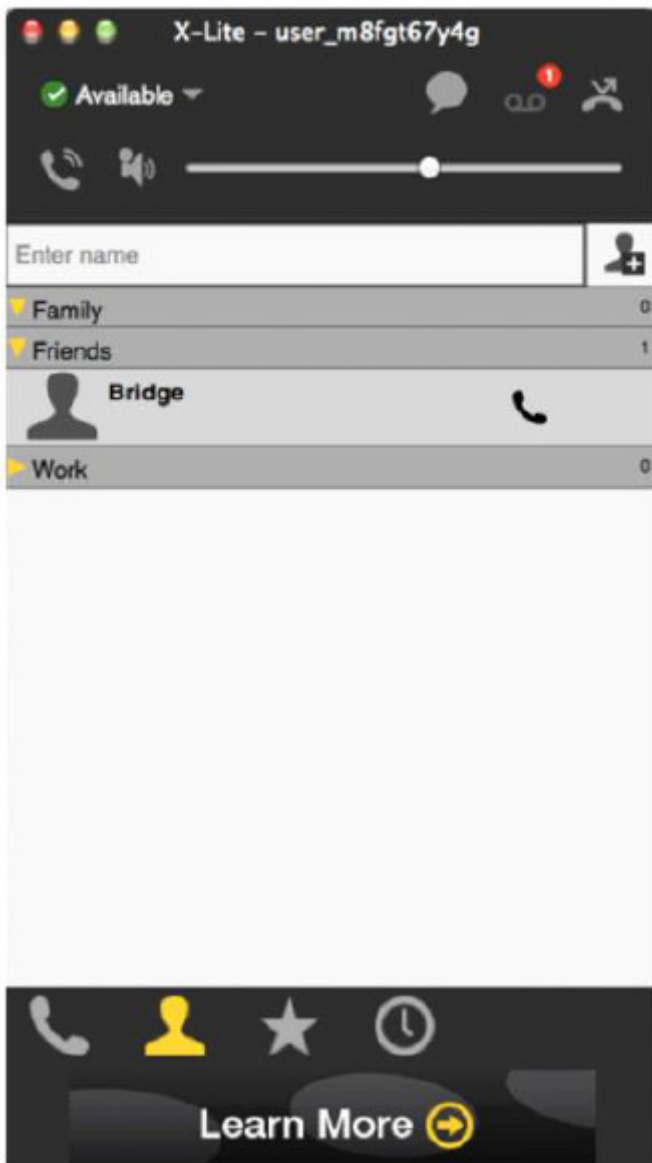
Step 3: Once you're in the Users tab, click on the specific user's Devices. Click new Device and select Softphone.



Step 4: Fill out the basic fields and create the device. The SIP User name and Password will be provided, but you will need to create a device name.



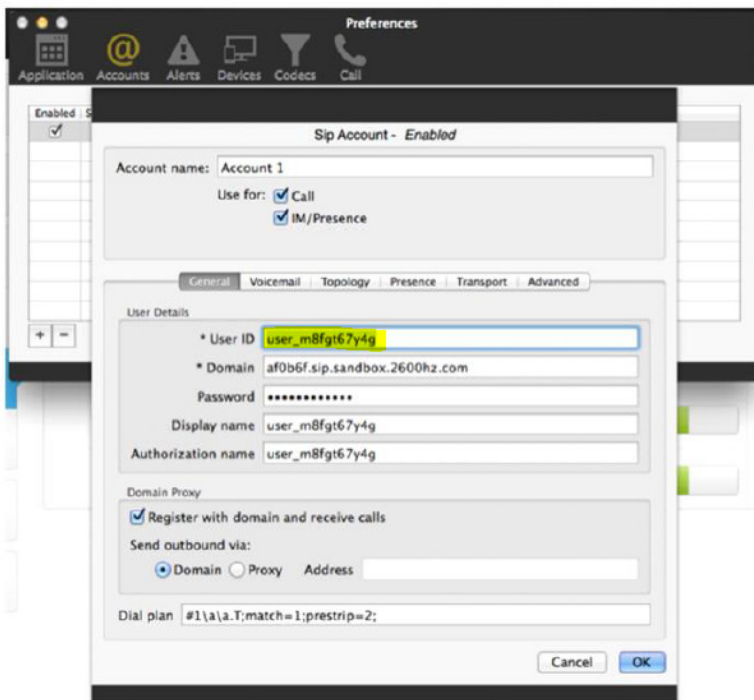
Step 5: Start X-Lite for the first time.



Step 6: Once you get into the App, you will need to access the Account information.

Mac - From the menu bar, choose X-Lite > Preferences >Accounts. The Account list appears with one account. Then click the + button and choose New SIP Account.

Windows -When the softphone appears, click the Go to Account Settings link. The SIP Account window appears.



Step 7: Fill out the User Details fields by transferring information from the Kazoo UI to X-Lite.

User ID = User name Domain = Realm Password = Password

Display name = Username

Authentication Name = Username

In the Domain Proxy section:

1. Click on the box next to Register with domain and receive calls.
2. Click on Proxy in Send outbound via section and enter you SIP server address. Click on OK. You have now completed setting up a Softphone and can make calls!